

LUXURY FIFTH WHEEL



Generations of family fun.

NORTH
POINT



NORTH POINT



2+3
YEAR YEAR
LIMITED STRUCTURAL
WARRANTY

NORTH POINT 377RLBH



377RLBH shown in Modern Farmhouse interior design

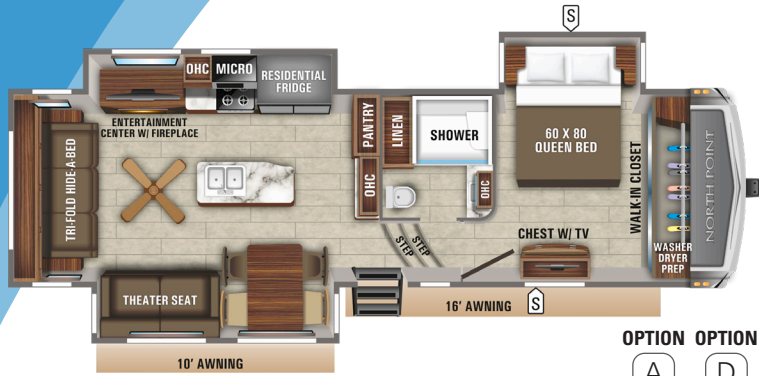


377RLBH shown in Cashmere Cottage interior design



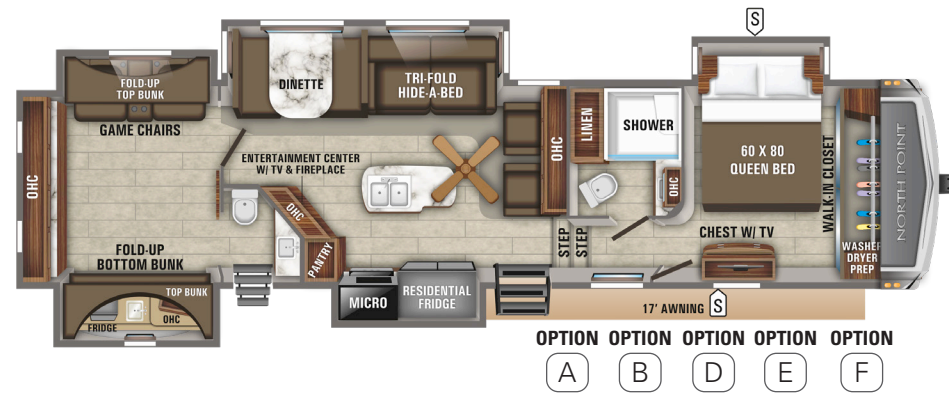
NORTH POINT FLOORPLANS

310RLTS



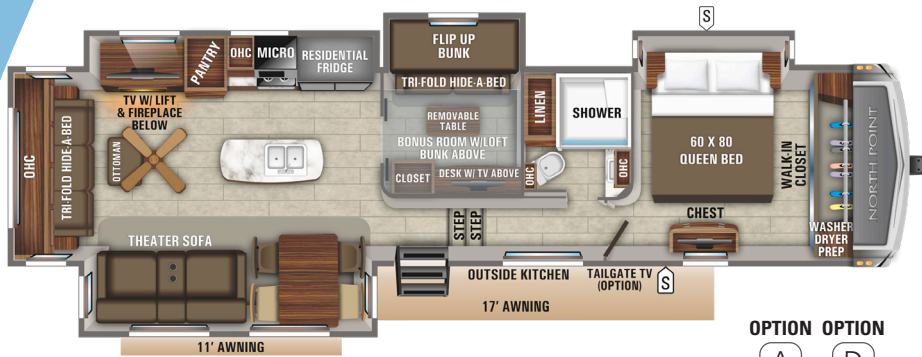
OPTION OPTION
A D

375BHFS



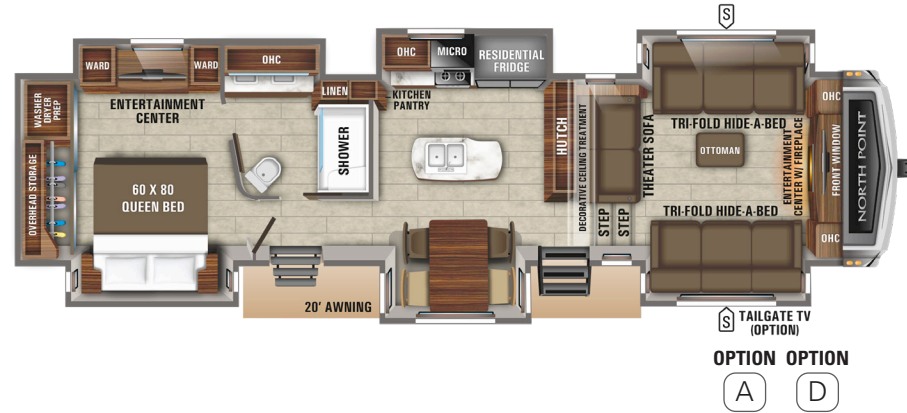
OPTION OPTION OPTION OPTION OPTION
A B D E F

377RLBH



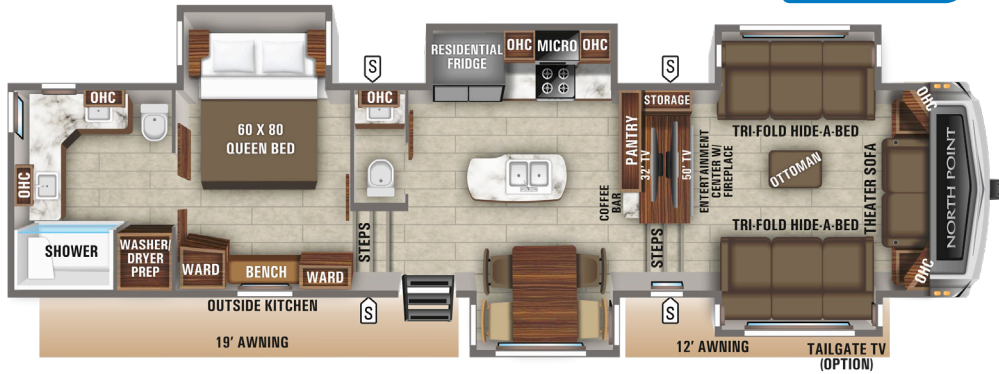
OPTION OPTION
A D

381FLWS



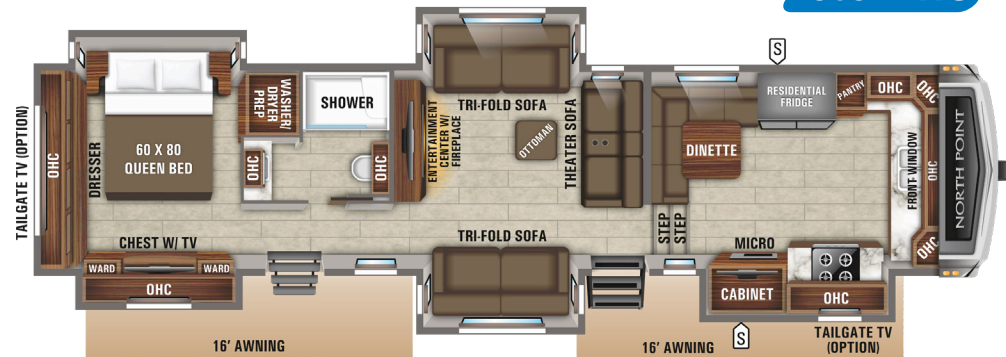
TAILGATE TV (OPTION)
OPTION OPTION
A D

382FLRB



OPTION
A

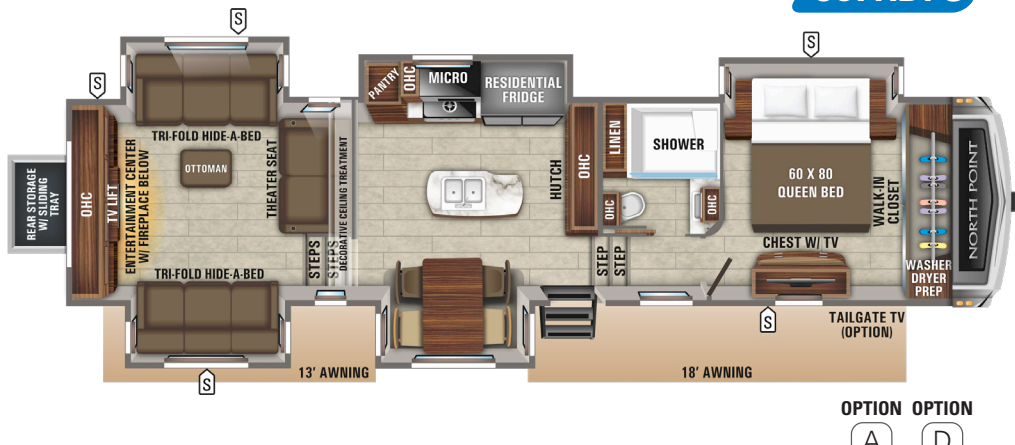
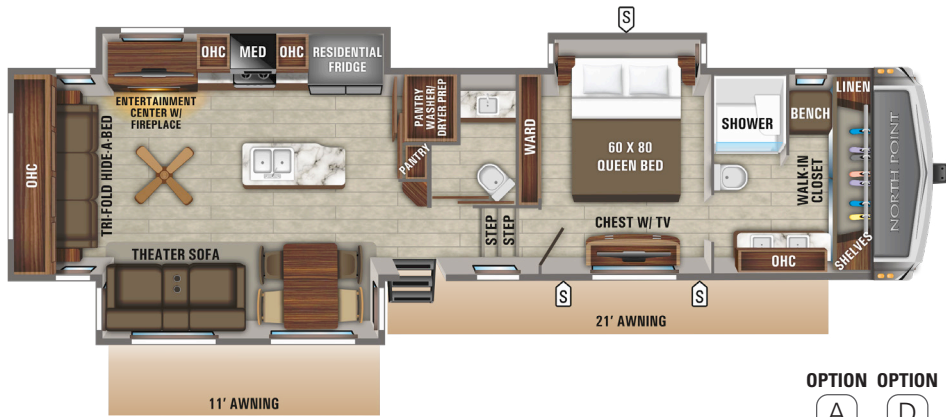
383FKWS



OPTION OPTION
A D

387FBTS

387RDFS



LEGEND

- STORAGE
- MICRO MICROWAVE
- OHC OVERHEAD CABINETS
- FRIDGE REFRIGERATOR
- WARD WARDROBE

OPTIONS

- A 72 X 80 KING BED OPTION
- B TABLE & CHAIRS OPTION
- C 18 CU. FT. FRIDGE OPTION
- D FOLD-UP TOP BUNK HIDE-A-BED OPTION
- E FOLD-UP TOP BUNK LOWER BUNK W/ TRUNDLE BED OPTION

SPECS

FLOORPLAN	TOTAL EXTERIOR LENGTH	EXTERIOR TRAVEL LENGTH*	EXTERIOR WIDTH	EXTERIOR HEIGHT (WITH A/C)	INTERIOR HEIGHT	INTERIOR HEIGHT - BEDROOM	UNLOADED VEHICLE WEIGHT	DRY HITCH WEIGHT	GVWR	CARGO CARRYING CAPACITY	FRESH WATER CAPACITY (INCLUDES WATER HEATER)	GREY WASTE WATER CAPACITY	BLACK WASTE WATER CAPACITY	SLEEP CAPACITY
310RLTS	35' 11"	34' 5"	8' 0"	13' 5"	8' 5"	6' 6"	12,125	2,440	15,000	2,875	85	87**	50	4-5
375BHFS	43' 0"	41' 6"	8' 0"	13' 6"	8' 5"	6' 7"	14,280	2,900	16,500	2,220	85	95.5**	100**	9-14
377RLBH	42' 11"	41' 5"	8' 0"	13' 5"	8' 5"	6' 6"	14,040	2,855	16,750	2,710	85	87**	50	8-10
381FLWS	43' 1"	41' 7"	8' 0"	13' 6"	8' 5"	6' 7"	14,020	3,750	16,750	2,730	85	37	74**	5-7
383FKWS	43' 10"	42' 4"	8' 0"	13' 3"	8' 5"	6' 7"	14,035	2,510	16,750	2,715	85	74**	74**	6-7
382FLRB	43' 7"	42' 1"	8' 0"	13' 5"	8' 5"	6' 6"	13,495	3,105	16,500	3,005	85	37	74**	4-6
387FBTS	42' 10"	41' 4"	8' 0"	13' 5"	8' 5"	6' 7"	13,325	2,795	16,000	2,675	85	87**	87**	3-4
387RDFS	43' 8"	42' 3"	8' 0"	13' 4"	8' 5"	6' 7"	13,945	2,790	16,500	2,555	85	87**	50	6-7

*Distance from the pin box to the bumper; total exterior length may be longer
 **Split tanks
 Some specs at the time of print may include estimates. For the most accurate information, please visit Jayco.com.

Unloaded Vehicle Weight (UVW): Sometimes referred to as "Dry Weight," UVW means the typical weight of the trailer as built at the factory. The UVW, as used in product literature and other promotional materials, does not include cargo, fresh water, propane, options or dealer-installed accessories.

Gross Vehicle Weight Rating (GVWR): GVWR means the maximum permissible weight of the trailer, including the UVW plus personal items, all cargo, fluids, options and dealer-installed accessories. The GVWR is equal to or greater than the sum of the UVW and the CCC.

Cargo Carrying Capacity (CCC): CCC means the maximum weight of personal items, food, fresh water, propane, tools, other cargo and dealer-installed accessories that can be carried by the trailer. CCC is equal to or less than GVWR minus UVW. The addition of options will decrease the CCC.

Hitch Weight (HW): The hitch weight, as used in product literature and other promotional materials, does not include cargo, fresh water, propane gas, options or dealer-installed accessories. The addition of these types of items will either add to or subtract from the stated hitch weight.

It is important for your safety and enjoyment that your tow vehicle be adequately sized and equipped to tow and handle the GVWR of the RV you select. Review weights and rating of your tow vehicle and consult a competent advisor for questions or advice. Whether you are new to RVing or a veteran, get a feel for the performance of your tow vehicle before heading out on the roadways. When you tow an RV, you must drive differently than when you drive a single vehicle. Practice hooking up, driving, backing up and braking in a safe environment or seek out professional instruction. Jayco affixes a weight label to each RV which lists estimated weight information for that vehicle. See specifications chart above.



Outside kitchen with grill and pass-through storage with Slam-latch™ baggage doors



American-made Goodyear® tires

Two **Unique & Beautiful** Concepts
 True interior design. More choice.
 Mindful craftsmanship.

Every fixture, fabric and feature has been carefully selected and expertly installed. The result is an aesthetic that's extraordinary--with Jayco's famous high level of live-ability. Led by Interior Designer Stacy Stewart, our design, product development and engineering teams set out to answer the call for more choice in RV interiors and developed a market-disrupting design concept that could be expertly crafted without hampering production.



CASHMERE COTTAGE



MODERN FARMHOUSE



JAYCOMMAND

THE JAYCOMMAND™ SYSTEM PUTS RVERS IN FULL CONTROL OF THEIR UNIT. THE SYSTEM WAS CUSTOM-BUILT BY OUR PRODUCT DEVELOPMENT TEAMS ALONG WITH BPRO®, SO THAT OWNERS CAN MONITOR AND CONTROL KEY RV OPERATIONS FROM A PHONE OR A TABLET.

- SYSTEMS CONTROLLED MAY INCLUDE:**
- GENERATOR
 - MULTIPLE LIGHT ZONES
 - AWNINGS
 - TANK MONITORING
 - LEVELING
 - SLIDEOUTS
 - WATER PUMP
 - WATER HEATER
 - TIRE PRESSURE MONITORING
- SPECIFIC FEATURES ARE FLOORPLAN SPECIFIC.

2020 NORTH POINT STANDARDS & OPTIONS

STANDARD EXTERIOR EQUIPMENT

Stronghold VBL™ aluminum framed and vacuum bond laminated gel-coated fiberglass exterior walls (including rear wall and slide room end walls)
 Magnum Truss™ XL6™ Roof System (strongest tested roof in the industry) with one-piece, seamless DiFlex II material
 Climate Shield™ zero-degree tested weather protection: Fully enclosed and heated underbelly (ducted), 40,000 BTU output furnace, double layer fiberglass batt insulation (roof, floor, cap, and slide room floors), PEX plumbing
 HELIX Cooling System™ (Industry exclusive): Exterior-mounted 15,000 BTU “Whisper Quiet” A/C unit, Jayco exclusive insulated dual duct design, directional and closeable A/C vents, larger return air vents with accessible filters
 JaySMART™ (Safety Markers And Reverse Travel)
 LED lighting (patent-pending)
 Painted fiberglass front cap with built-in specialty LED lighting
 Frameless, dark tinted, safety glass windows
 Custom automotive-grade vinyl exterior graphics package
 Skirt metal enclosed drop frame
 LED exterior lighting package
 Dual 30 lb. propane bottles with auto regulator
 Doorside compartment framed and vented for third propane bottle
 Pass-through storage with Slam-latch™ baggage doors
 Digital TV antenna with Wi-Fi extender
 Exterior marine-grade speakers
 Fully enclosed, LED-lit Nautilus universal docking center:
 Selectable water connections, quick-connect outside shower, black tank flush, winterization, and sanitation,
 Independent satellite and whole coach cable hookups
 Water heater bypass
 Battery disconnect
 Under-mounted spare tire
 (Goodyear® Endurance® tires- Made in USA)
 LP quick connect (outside grill prep)
 Roof ladder
 Equalizer hydraulic 6-point auto-leveling system with oversized foot pads

STANDARD INTERIOR EQUIPMENT

Solid hardwood slide fascia
 Handcrafted and glazed doors, drawers and trim
 Soft close, heavy-duty, 75 lb. full extension, steel ball-bearing drawer guides
 5/8 in. tongue and groove joined plywood floor decking
 Shaw® residential carpeting with R2X® stain guard (Made in USA) in slideout only
 Shaw® vinyl flooring (Made in USA) throughout
 Ceiling fan (select models)
 LED interior lighting throughout
 LED accent lighting above slideouts
 Toe kick night lights in bedroom and bathroom
 Central command center with built-in tank monitoring

Tri-fold hide-a-bed sofa with residential sleep surface and ottoman (select models)
 Stainless steel kitchen sink
 Residential-grade, pullout kitchen faucet
 Dual USB charging ports
 12V charging station
 Extra 110V power outlets in kitchen and slide rooms
 Bathroom skylight
 LED backlit medicine cabinet with custom framed mirror (Industry first)
 Bathroom stone and glass tile backsplash
 Porcelain foot flush toilet
 Residential quilted bedspread and pillows
 Gas-strutted under-bed storage
 CPAP prepped bedroom
 Carbon monoxide and LP detector

CUSTOMER VALUE PACKAGE (MANDATORY)

15,000 BTU “Whisper Quiet” A/C
 Electric patio awning with integrated LED lights
 Quick recovery gas/electric DSI water heater (20 gal. per hour)
 Residential queen (60 in. x 80 in.) Serta® mattress with under-bed storage
 Custom machined aluminum rims
 LED HDTV with fully digital HDMI output
 Dual mode 12V AM/FM/CD/DVD/USB/ A/V system with Bluetooth® and HDMI®
 Integrated sound bar
 Stainless steel range with glass cover
 Keyed Alike™ lock system (single key for all doors/locks)
 Rooftop and ground solar prep by GoPower®
 Backup camera prep (rear observation)
 Hidden hinges
 XL grab handle
 Wireless remote control system

5 STAR HANDLING PACKAGE (MANDATORY)

Goodyear® Endurance® tires (Made in USA)
 MORryde® pin box
 Dexter® Axles with Nev-R-Adjust® brakes and E-Z Lube® hubs
 MORryde® CRE-3000™ rubberized suspension
 Wet bolt fasteners and bronze bushings

LUXURY PACKAGE (MANDATORY)

Equalizer hydraulic 6-point auto-leveling system with oversized foot pad
 JAYCOMMAND™ “Smart RV” system powered by BMPRO Drinking Water System™
 2nd electric patio awning with integrated LED lights
 MORryde® StepAbove™ entrance steps (main entrance) with blue LED light
 Washer/ dryer prep
 Central vacuum system

Convection microwave
 21 cu. ft. residential refrigerator and 1200W pure sine wave inverter
 Freestanding (no pedestal) table with leaf and (2) freestanding storage and (2) folding chairs
 32 in. bedroom TV
 Bellavati® solid-surface kitchen counterop with bamboo sink cover and strainer
 One-piece fiberglass shower with triple sliding glass door
 LED fireplace with 5,000 BTU electric space heater
 Whole coach water purification system
 Cellular prep for antenna and JAYCOMMAND™ “Smart RV” System
 Tire Pressure Monitoring System
 High gloss gel coat sidewalls
 Oversized multi-battery compartment (Industry leading)
 Frameless dark tinted safety glass windows

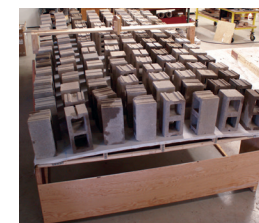
OPTIONS

Canadian Standards (CSA)
 Custom contemporary or traditional interior design (Industry first!)
 Customer Value Package: 15,000 BTU central air with heat pump
 Serta® King residential foam-top mattress
 Bunk bed with hide-a-bed (select models)
 Bunk bed with trundle (select models)
 18 cu. ft. Norcold Polar Max gas/electric refrigerator with ice maker
 Freestanding table with (4) chairs (375BHFS)
 Overlander solar kit (solar controller and roof-mounted 190W panel)
 Wireless backup/rear view camera kit
 Tailgate 39 in. TV in cargo
 3rd- 15,000 BTU A/C in living area (select models)
 Sani-con® Turbo waste management system (select models)
 Generator prep with 120 lb. max LP system
 5,500W Onan® Microquiet Generator
 Frameless dual pane tinted safety glass windows
 Slideout awning toppers
 2 in. accessory receiver hitch
 Exterior grill



50 percent Stronger

4,500 lbs. on a Jayco roof vs. other roofs



Jayco's roof **VS.** other roofs

5-STAR HANDLING PACKAGE

The 5-Star Handling Package is a Jayco exclusive, a powerful blend of high-end American-made components that make pulling a luxury fifth wheel a breeze.



DEXTER AXLES WITH NEV-R-ADJUST BRAKES
The Benchmark of the trailer industry!



MORRYDE PIN BOX
Allows pin box to travel forward and backward as well as side-to-side, creating a smoother tow.



DEXTER HEAVY-DUTY SHACKLES WITH WET BOLT FASTENERS AND BRONZE BUSHINGS
Resists the wear-and-tear of towing.



MORRYDE RUBBERIZED SUSPENSION SYSTEM
Better absorbs and isolates road shock.



GOODYEAR "Beast" TIRES
Made in the U.S.A. and featuring the patented Durawall® technology.

CLIMATE SHIELD



Extend your camping season with the Jayco Climate Shield.

It protects against extreme heat and extreme freezing—even in temperatures as high as 100 degrees or as low as zero degrees (Fahrenheit).*

BEDROOM	LIVING ROOM	KITCHEN	BATHROOM	HOLDING TANK
0°F 71°F	0°F 70°F	0°F 69°F	0°F 71°F	0°F 60°F
100°F 71°F	100°F 69°F	100°F 70°F	100°F 68°F	100°F 72°F

*Jayco tested fifth wheels in zero degrees F and 100 degrees F weather over an extended period of time in a controlled environment, and all functions of the coach were fully operational. Testing was done in a completely controlled environment; therefore, temperatures during testing may not represent actual temperatures in nature and cannot account for elements such as wind or moisture. In actual use, unit may not perform as well. Supplier of cooling components does not guarantee anything better than 20 degrees difference from ambient temperature. In addition, outside components are subject to freezing and require steps to properly insulate. Jayco's limited warranty does not cover damage caused by freezing. To learn more about Climate Shield and testing done by Jayco, visit www.jayco.com.



MADE IN USA

Featuring Durawall® Technology - ENGINEERED to help you tow with confidence

2+3

YEAR LIMITED | YEAR STRUCTURAL WARRANTY

Travel with Confidence

NO ONE OFFERS A BETTER WARRANTY
At Jayco, we build our RVs to handle every adventure, then back them with our industry-leading 2+3 warranty. Our 2-year limited warranty has you covered for 2 camping seasons. That's **730 days**. In addition, our 3-year structural warranty has you covered for **3 camping seasons or 1,095 days**. You won't find a better warranty in the business, because the only strings we attach are those that deliver the ultimate in reliability. That's the Jayco difference. So go explore. For a copy of our 2-year limited + 3-year structural warranty with complete terms and conditions, please contact your local Jayco dealer.

Meet your Jayco Dealer _____



Jayco, Inc. | P.O. Box 460 | Middlebury, IN 46540 ☎ www.jayco.com
See dealer for further information and prices. All information in this brochure and on www.jayco.com is the latest available at the time of publication approval. Jayco reserves the right to make changes and to discontinue models without notice or obligation. Photography may show optional equipment or props used for decoration purposes only. RVs built for sale in Canada may differ to conform to Canadian codes. JAYCO and the JAYCO BIRD IN FLIGHT are registered trademarks of Jayco, Inc. Printed in USA 10K 3/20 ©2020 Jayco, Inc.

Follow Jayco
#LetsJayco

